



Transforming Professionals Into
Future Leaders

PLACEMENT REPORT 2020-2022

Welcome to India's first-of-its-kind institution of real estate, construction, and infrastructure which offers specialised education, world-class training, research, and best practice guidance in the industry.

The RICS School of Built Environment endeavours to set new benchmarks in placements every year.



Transforming Professionals Into Future Leaders

Our platform helps students connect with domestic and international firms seeking professionals with integrity and ethics. We work very hard to bridge the gap between students' skills and knowledge with employers' job requirements.



Placement Highlights and Statistics



**8th
Placement
Session**



**150 Organisations
Participated**



**98%
of Students
Placed**



**45%
Organisations
Participated for
the First Time**



**52%
Placements
Happened in the
First 3 Months**



**15 LPA
Highest
Salary Package**



**6.8 LPA
Average Salary
Package**



**Competency
Based Internship
with Stipend**



**CEQS
Batch was
the First to be
Fully Placed**



**International
Placements Show
Signs of Market
Confidence**

RICS SBE invited prestigious domestic and international firms to participate in the placement process, resulting in 98% of the batch getting placed. The market was on an upward swing after the devastating impacts of Covid which led to a lot of pent-up demand in the industry, leading to bulk hiring by many organisations.

We owe our success to the unwavering support and backing of 1000+ leading organisations in the industry.

RICS SBE has a dedicated training and placement cell for the job orientation of students, because of which our students are successfully placed in leading organisations. The placement department functions as a bridge between the institution, companies, and students. We provide a well-laid-out systematic process for meeting students' career goals and corporate expectations.



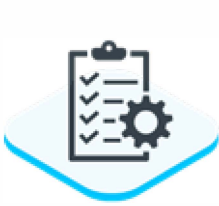
Since RICS is a professional body, the industry has whole heartedly supported us through all our placement seasons and continues to do so.

The school has the distinction of being the first and only school in India with RICS and PMI-accredited courses. This is the quickest path to becoming an MRICS, which is a hallmark of professionalism in the sector.

Students are given RICS' international pedigree and global linkages to leverage, which helps them to be accepted as global professionals in terms of opportunities.



Job Roles Offered



Project
Management



Associate Advisory
& Transactions



Risk Analysis,
Risk Mitigation



Feasibility
Studies



Data
Management
Analyst



Residential Sales
Commercial
Leasing



Procurement
& Billing



MT Market Land
Industrial Data



Senior BIM
Engineer



Business
Development
Engineer



Contracts



Mortgages



Relationship
Manager



Valuation



Technical
Manager

**JOB
OFFER**

Job Roles Offered



Sales Manager



Assistant
Manager Architect



Portfolio Ops
Transaction
Management Team



Post Graduate
Management Trainee
(Project Management)



Relationship Manager:
RE Finance Business



Project Coordinator



Credit Analyst



Valuation &
Advisory



Consulting



Strategic
Consulting



Commercial
Advisory
& Transaction



Financial
Modelling

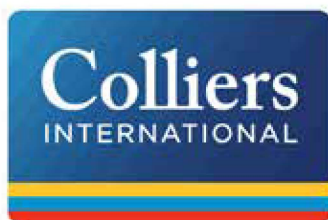


**JOB
OFFER**

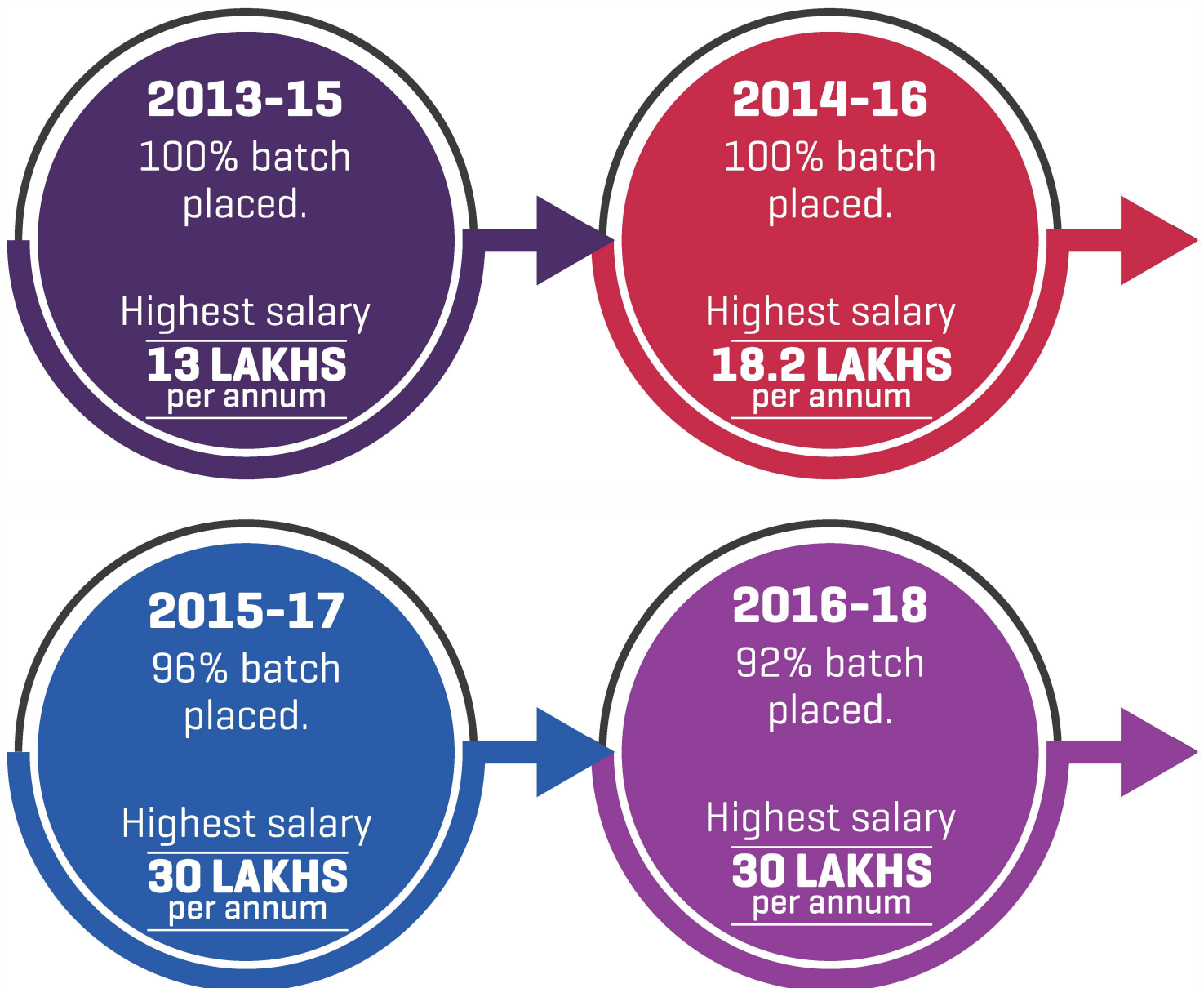
Internships

Firms that gave our students internship opportunities

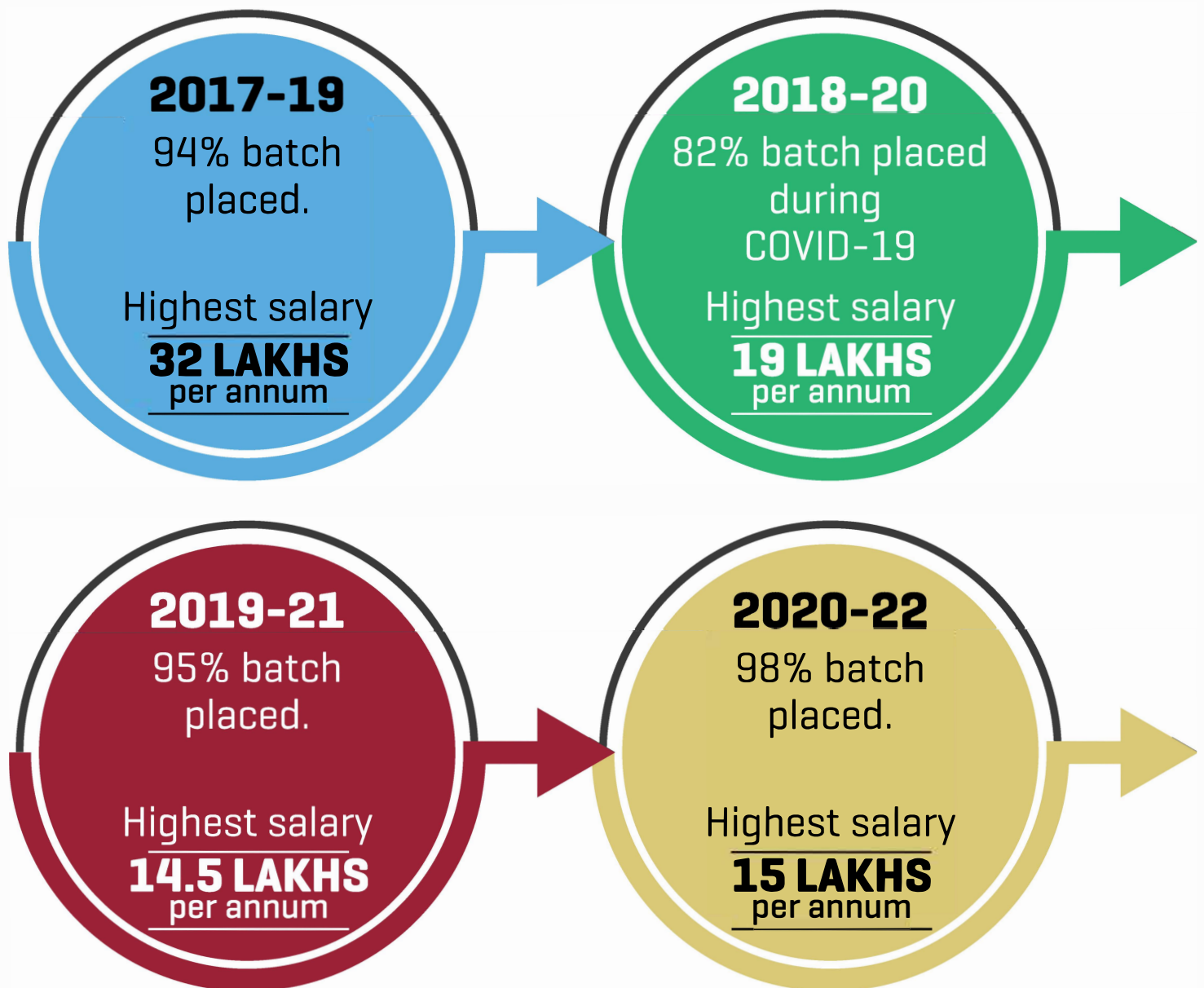
CBRE



Placement Snapshot over the Years



Placement Snapshot over the Years



Key Employers

CBRE

Godrej | PROPERTIES

mace

Turner & Townsend

CUSHMAN & WAKEFIELD

JLL

TATA
TATA CONSULTING ENGINEERS LIMITED

Knight Frank

BURNS & MCDONNELL



JMC PROJECTS (INDIA) LTD
A Kojima Group Enterprise

HDFC
HOME LOANS
WITH YOU, RIGHT THROUGH

ICICI Bank

KARLE INFRA

ATKINS

HomeLane

RELIORIX
CONSULTING

Fullerton India

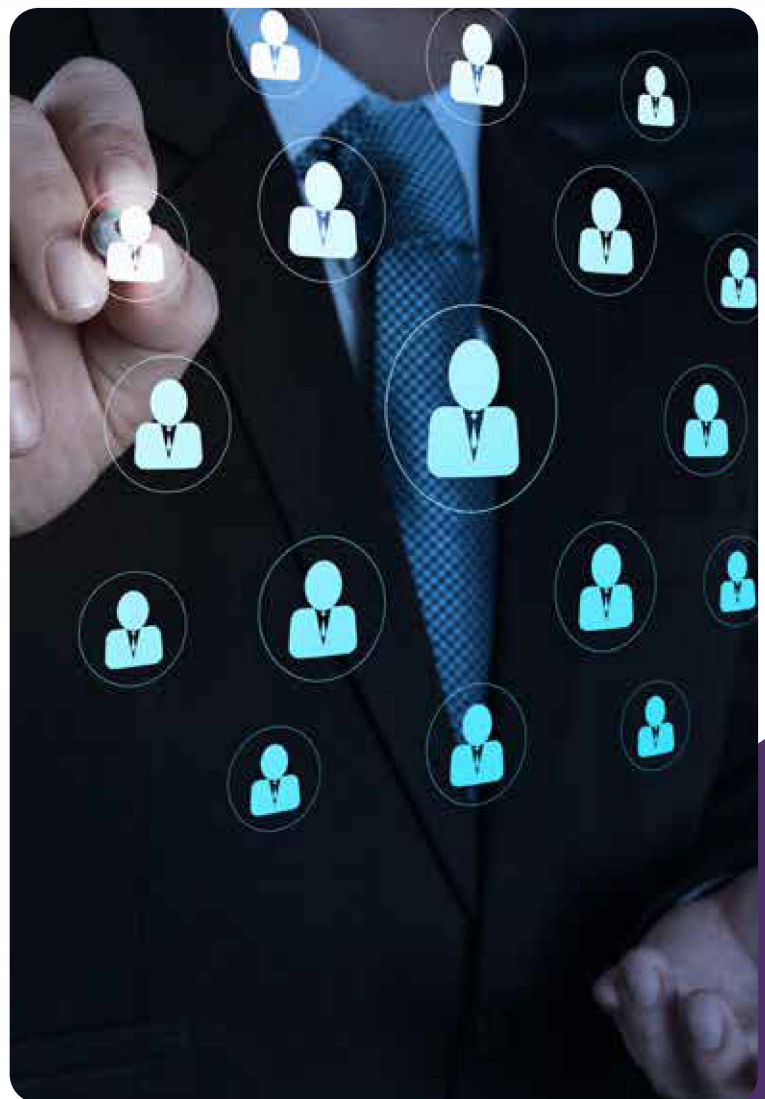
اتحاد قطر للتخطيط
QATAR DESIGN CONSORTIUM

SOBHIA
REAL ESTATE

asianpaints

XANADU
INSPIRING MOMENTUM

LIVIO



Key Highlights

- More representation in IPCs – 82% more as compared to 2021
- 17% of organisations hired 5 or more students
- 45% students placed in A+ and A category organisations
- Placements in the international market ratify the global essence of RICS
- Compass Project Consulting, Dubai hired an MBA in CPM student as a Quantity Surveyor
- Livio was one of the first companies to come on campus and hire 9 students
- Tata Consulting Engineers hired 15 students
- Livspace Design hired 24 students from different courses



Average package increased by 15% since Covid meltdown

Organisations that made 5 or more offers

CBRE

Godrej | PROPERTIES

TATA
TATA CONSULTING ENGINEERS LIMITED

 **JLL**

LIVIO
Formerly Aech Builders

 **LIVSPACE**

RELIORIX
CONSULTING



RICS SBE

RICS School of Built Environment is India's first RICS Accredited Institution led by the industry for the industry. Our accredited degree post-graduates have an edge over other students as they are likely to become chartered professionals [MRICS qualification] within a few years.



Student Stories



Paras Chauhan, MBA CPM, 2020-22
Placed with JLL



Vijayashree Dwivedi, MBA REUI, 2020-22
Placed with Capital Developers



Aashima Arora, MBA REUI, 2019-22
Placed with Knight Frank



Sneha Duary, MBA CEQS, 2017-19
Placed with Vedas Consultants





Contact us

Noida Campus

Block - F2, Fifth Floor, Amity University,
Sector - 125, Noida 201313 [UP], India

Mumbai Campus

303, Third Floor, Amity University,
Mumbai - Pune Expressway, Panvel,
Mumbai - 410206, Maharashtra, India

t +91 847 101 1011

w ricssbe.org

e ricssbe@ricssbe.edu.in